



## LABELING AND IDENTIFICATION SYSTEMS

# DYNAMIC 120

## 1000 series



The Dynamic is a labeler of contained weight and footprint.  
Thanks to a special return it can have variable geometry, with the reel housing in two possible positions or even remoted.

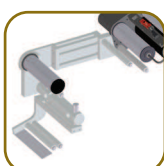
- 120mm / 4.72" label liner maximum width
- ideal for installation inside any packaging machine
- Advanced control unit, which is independent and can be located wherever most practical for the operator (cable lenght: 3 metres / 9.84 feet)

DYNAMIC	120
max speed	40m/min - 131'/min
max reel diameter	280mm - 11.02"

## Peelers and Applicators



RIGID



QUICK OPENING  
RIGID



DOWN UNDER  
RIGID



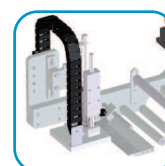
SPRING  
ARTICULATED



ELECTROMAGNETIC  
ARTICULATED

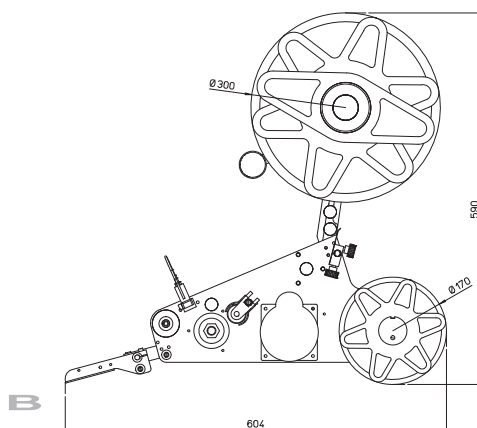
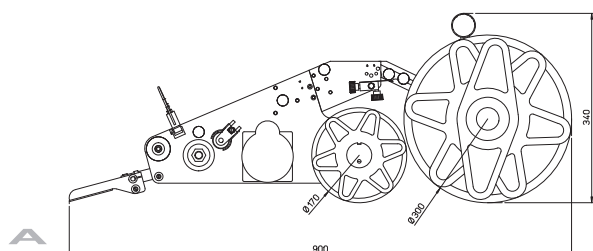


CONCORDE



HIGH PRECISION  
SAFE

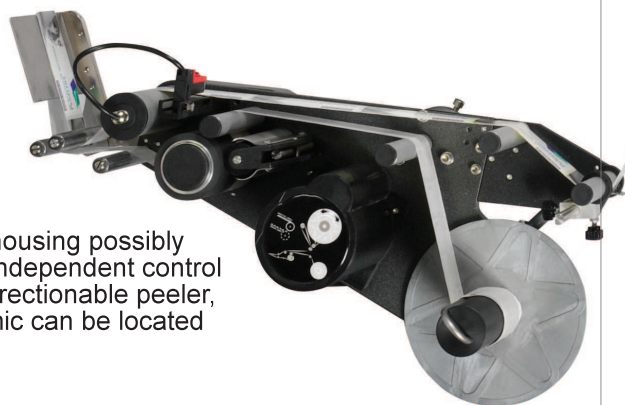
## Dynamic reel housing



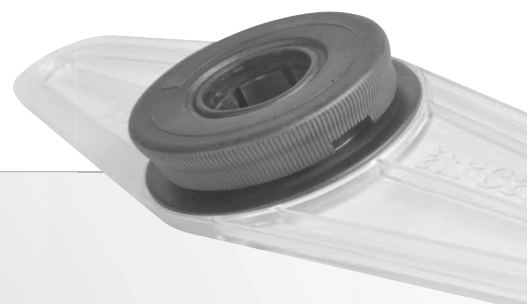
The label reel housing employs a special polymer disk, hardened with fiberglass, to adequately support the heaviest reels even in the case of a labeler positioned horizontally



With reel housing possibly remoted, independent control unit and directionable peeler, the Dynamic can be located anywhere



The reel securing plaque is transparent, light and takes up little space. Equipped with ergonomic handle, it can be quickly removed with a rotation of only 60°



Dynamic 120 equipped with Quick Opening peeler and cutting set

The Arca solution for easy opening of shrink wrapped packets. Pulling the self adhesive label, the user can quickly free the contents from the plastic wrapping, without getting dirty or contaminating the product



FM 22116